



# **KALIX CONTACTLESS**

Mains-Fed Water Coolers

## USER MANUAL

P1CPVCDKY, P1CPVCDHSY

- Safety information
- How to use
- Warranty
- Contacts

**BEFORE YOU START USING THIS WATER COOLER, PLEASE READ THE FOLLOWING INSTRUCTION CAREFULLY.**

NOTE:

All coolers should be sanitized prior to first use. The appliance is suitable for indoor use in domestic, commercial & industrial locations.

 **Safety Information**

This appliance is not intended for use by persons (including children) with reduced physical, sensory or mental capabilities, or lack of experience and knowledge, unless they have been given supervision or instruction concerning use of the appliance by the person responsible for their safety.


Children should be supervised to ensure that they do not play with the appliance.

Cleaning and user maintenance shall not be made by children without supervision.

Installation and servicing of the water dispenser should be carried out by an authorized dealer or service centre. OASIS will not be responsible for any injury, loss or damage of any kind sustained as a result of misuse of the water dispenser.

If the supply cord is damaged, it must be replaced by a special cord or assembly available from the manufacturer or its service agent.

This appliance must be earthed.

 **Failure to fill hot tank with water before turning on the hot tank can damage the unit.**


Recommended ambient temperatures for correct operation of the unit are between 10°C and 32°C.


Before cleaning the cooler, you should ensure that the unit is unplugged from the power supply.

This product contains the hydro-fluorocarbon refrigerant R-134a which has a Global Warming Potential of 1,430.

Do not place anything on top of cooler- risk of accidental activation of water sensor.

Do not approach within 60cm of the device while wearing a Hi-Vis safety vest – risk of accidental activation of water sensor.

 **WARNING: To avoid hazard due to instability of the appliance it must be fixed according the instructions**

 **WARNING: When positioning the appliance, ensure the supply cord is not trapped or damaged**

 **WARNING: Do not locate portable socket-outlets or portable power supplies at the rear of the appliance**

 **WARNING: Hot water can scald.**

**WASTE OF ELECTRICAL AND ELECTRONIC EQUIPMENT**



The marking on the product or related information material indicates that the product should be disposed of in accordance with local legal requirements for waste electrical and electronic equipment.

To avoid harm to the environment and human health from uncontrolled waste disposal, please separate the product from other types of waste and recycle responsibly to promote the reuse of material resources as a permanent practice.

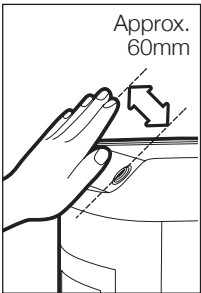
Users should contact the point of sale where they purchased the product or their local authority for information on where and how to safely recycle this product.

Business users should contact their supplier and check the terms of the purchase contract.

The products should not be disposed of with other commercial waste.

## Operating / Maintenance

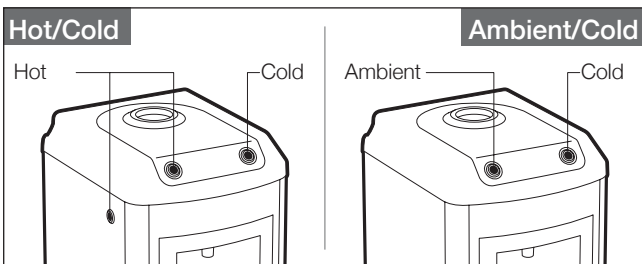
### DISPENSING WATER



1. Hold your hand approx. 60mm above the sensor. The indicator light will start to flash and water dispensing will begin.
2. Remove your hand from in front of the sensor to stop dispensing water.

Water is dispensed as follows:

White Sensor	Ambient Water
Blue Sensor	Cold Water
Red Sensor	Hot Water



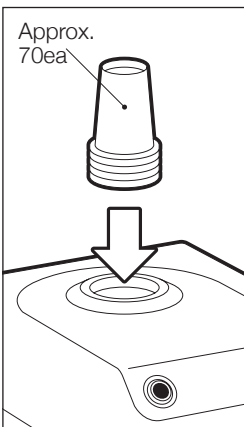
NOTE: This product uses contactless sensors to activate water dispensing.

NOTE: As a safety feature, you must activate the two red sensors at the same time to dispense hot water.

### USING CUP DISPENSER

(P1CPVCDxx models only)

The unit contains a spring-loaded cup dispenser built into the lid. It is capable of storing approx. 70 cups.



#### Filling Up :

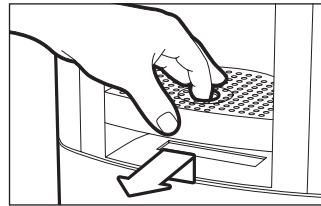
Take a stack of cups and turn them up-side down. Place the cup stack on top of the rubber ring in the cup dispenser and press down firmly.

#### Using Cup :

Hold the cup lightly and pull it out of the dispenser.

### EMPTYING THE DRIP TRAY

(No auto drain system models)

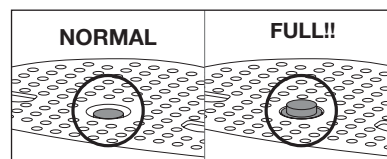


Lift it up by about 30mm before you pull it forward.

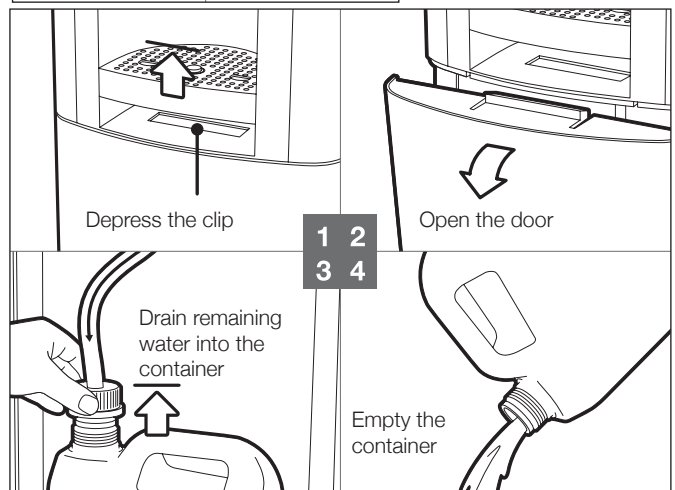
NOTE: Check with your service provider if self-drain option has been installed – if you have a self-draining drip tray then you do not need to remove it for emptying.

### EMPTYING THE WASTE WATER CONTAINER

(Auto drain system models only)



Check the float Indicator



### CLEANING THE COOLER

Under no circumstances use abrasive cleaning products or chlorine based cleaners – they will damage the surface finish of the coolers.

Use mild soap and warm water to clean the panels.

OASIS recommend that you use an anti-bacterial wipe to clean the water outlet on a weekly basis.

### NORTH AMERICAN MODELS ONLY

In order to meet UL requirements, this water cooler must be plugged into a Ground Fault Circuit Interrupting (GFCI) receptacle.

**⚠ WARNING:**

The warranty and CE certification for this machine are automatically void if any alteration, modification, or combination with any other machine or device is deemed to be the source of any claim. The CE certification may be void as the result of any alteration or modification. The manufacturer accepts no liability resulting from any alteration, modification, or combination with any other machine or device.

**EXCEPT AS SET FORTH HEREIN, THE MANUFACTURER MAKES NO OTHER WARRANTY, GUARANTEE, OR AGREEMENT EXPRESSED, IMPLIED OR STATUTORY, INCLUDING ANY IMPLIED WARRANTY OR MERCHANTABILITY OR FITNESS FOR A PARTICULAR PURPOSE.**

## DOWNLOADS

[www.oasis.ie/support-downloads](http://www.oasis.ie/support-downloads)



[www.oasis.ie](http://www.oasis.ie)

[info@oasis.ie](mailto:info@oasis.ie)

## OASIS IRELAND

Bunree Industrial Est., Ballina,  
Co. Mayo, Ireland, F26 D5R3  
+ 353 96 71222

## OASIS POLAND

ul. Gutenberga 20,  
44-164, Gliwice, Poland  
+ 48 32 332 65 01